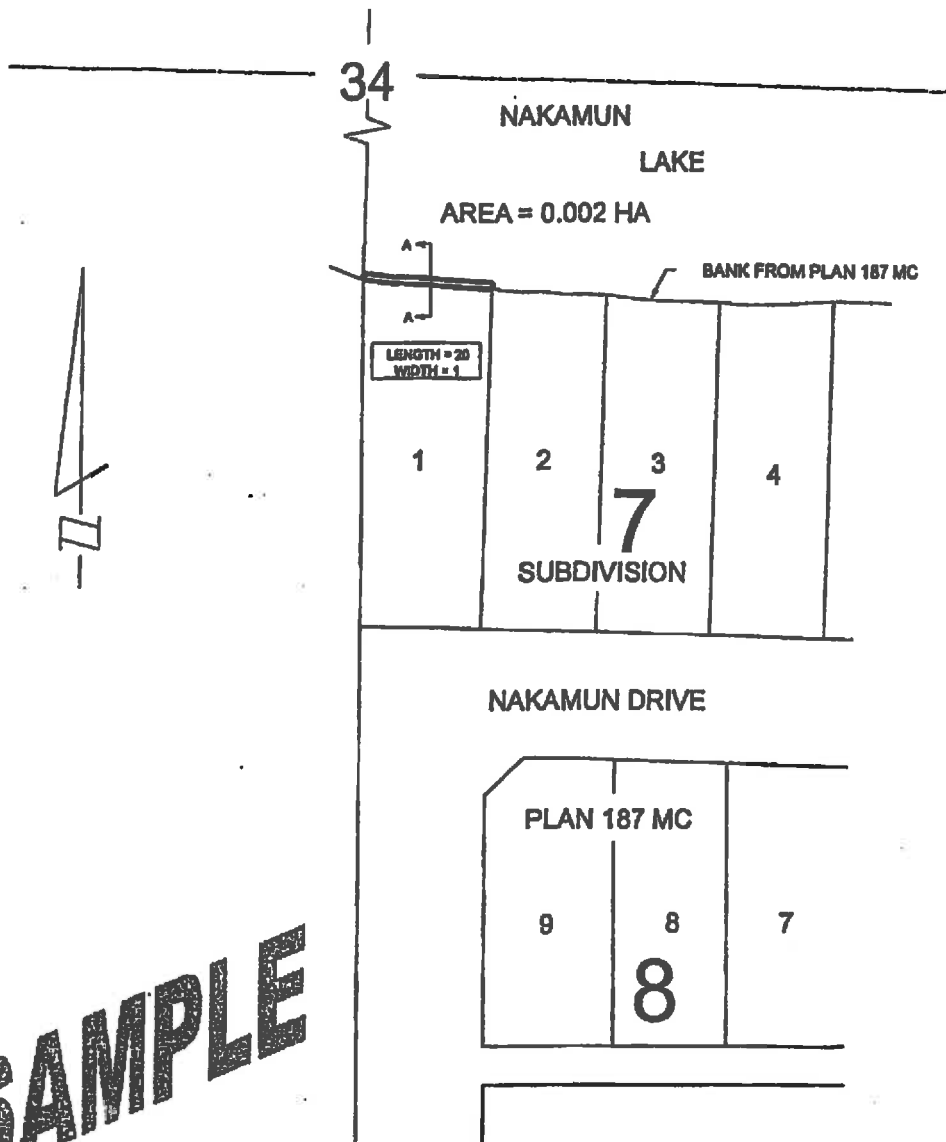


TOWNSHIP 56, RANGE 2 WEST 5



SAMPLE

PLAN SHOWING LOCATION OF BANK STABILIZATION

PLAN PREPARED FOR :
PLAN PREPARED BY :
FILE #:

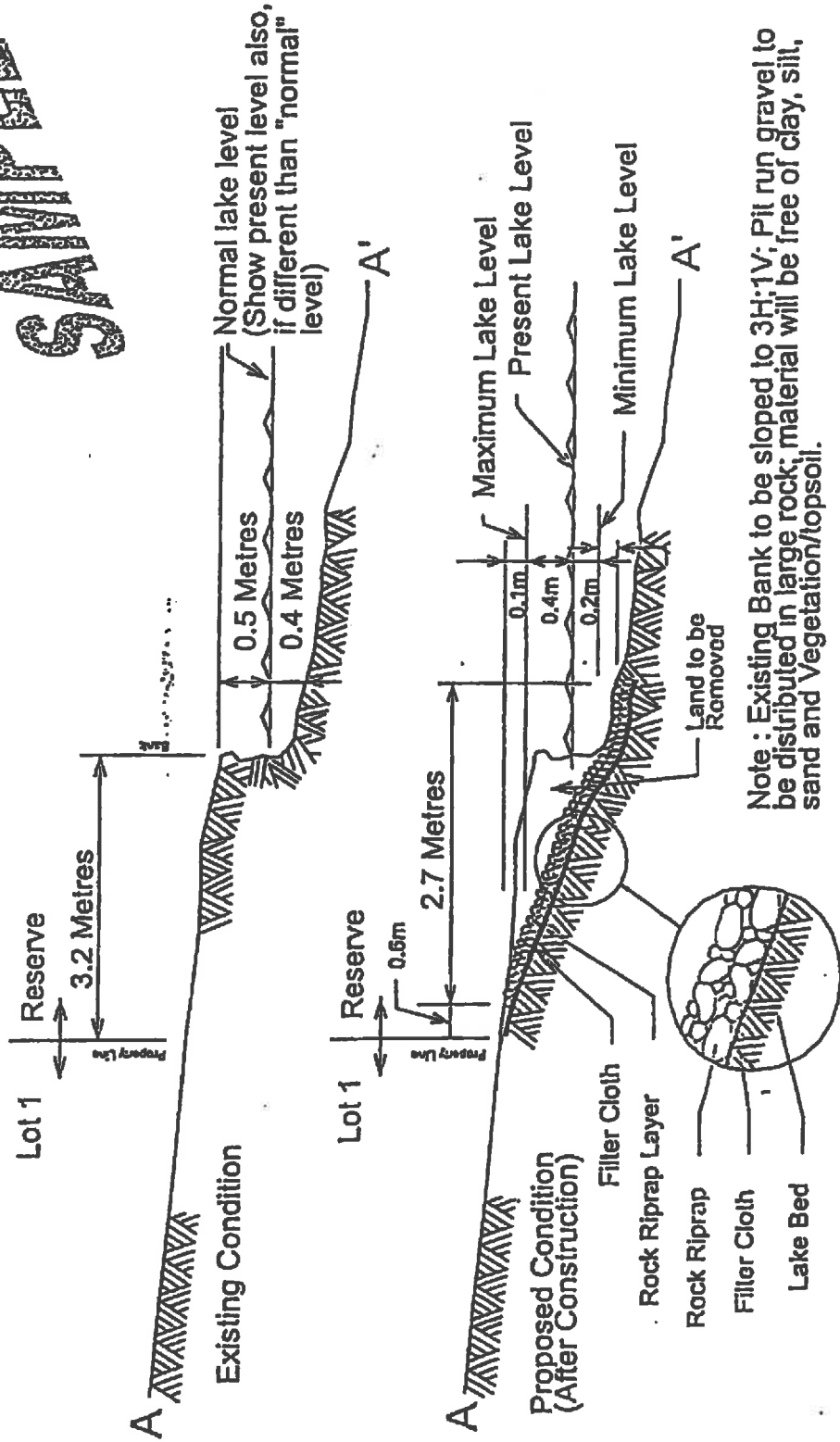
SCALE: 1:1000
DISTANCES IN METRES

SAMPLE OF PLAN REFERENCING BASE "D"

BANK STABILIZATION CROSS SECTION A-A

Subdivision Plan 187 MC Block 7 Lot 1
(TOWNSHIP 56, RANGE 2, WEST 5 MERIDIAN)
(South east Quarter of Section 34)

SAMPLE

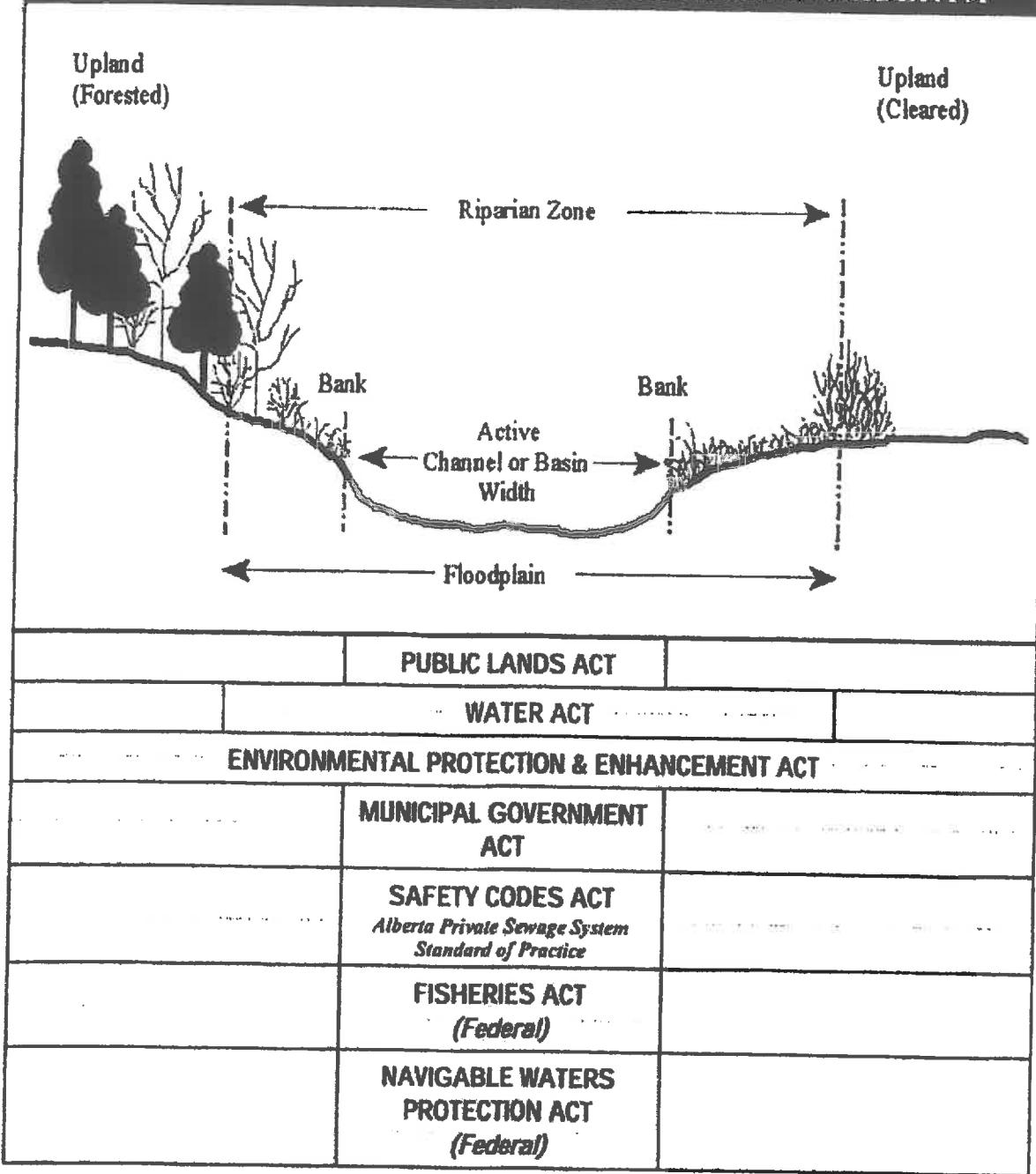


Note : Existing Bank to be sloped to 3H:1V; Pit run gravel to be distributed in large rock; material will be free of clay, silt, sand and Vegetation/topsoil.

PLAN PREPARED FOR :
PLAN PREPARED BY :
FILE #:

DISTANCES IN METRES

LEGISLATION AFFECTING WATER BODIES IN ALBERTA*



* Not all applicable legislation is depicted in the table, only the most commonly encountered.

Respect Our Lakes